

Measurements °C

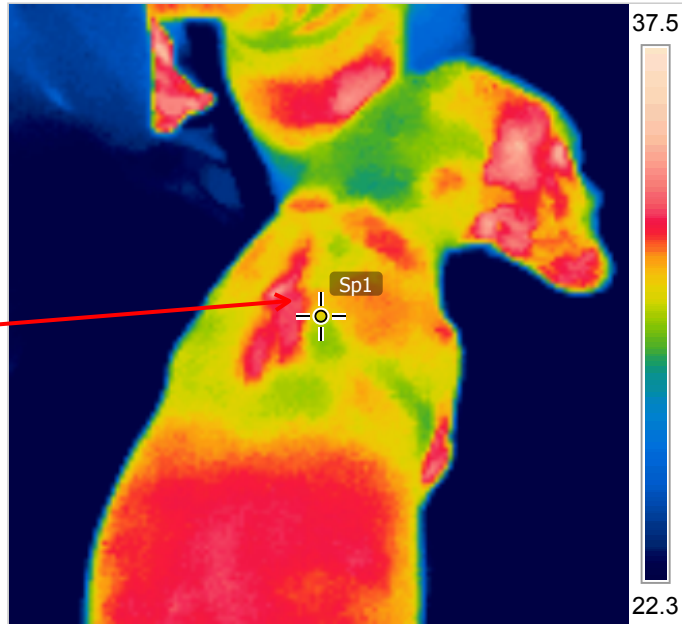
Sp1	30.6
-----	------

Parameters

Emissivity:	0.8
Refl. apparent temp.:	26 °C

Percy was recently diagnosed with a benign tumour, pressing on spine at base of neck / within shoulder. Clearly causing discomfort - yelping on jumping in and out of car for example.

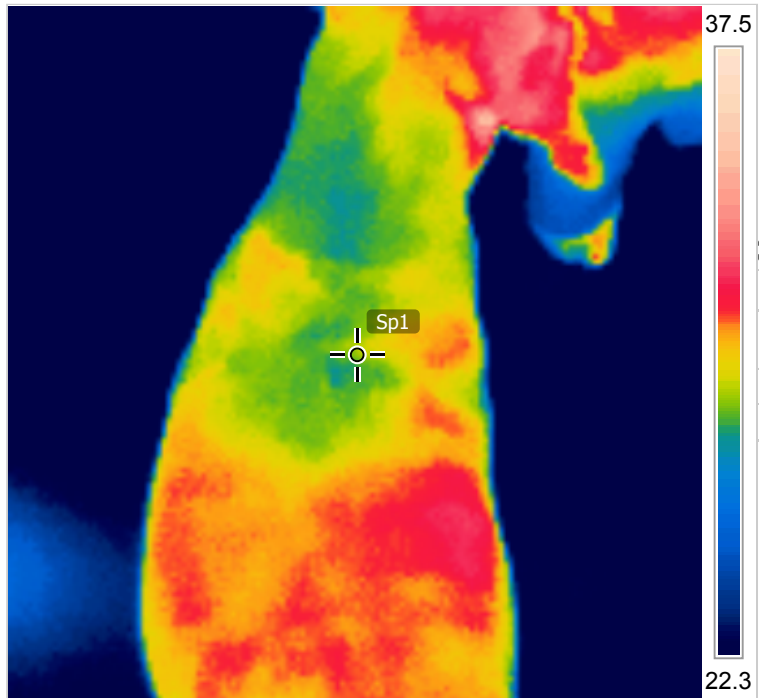
26/08/2012 14:18:08



IR\_0137.jpg

26/08/2012 15:09:42

Percy before and after a Reiki session with Reiki Master Group end August 2012.



IR\_0138.jpg